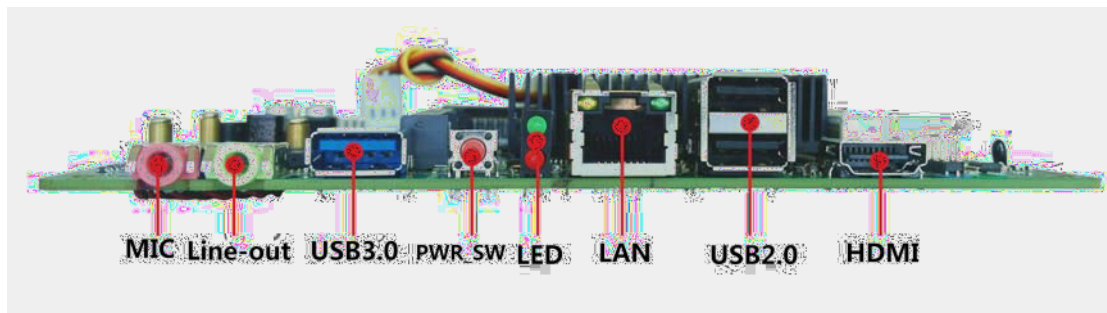
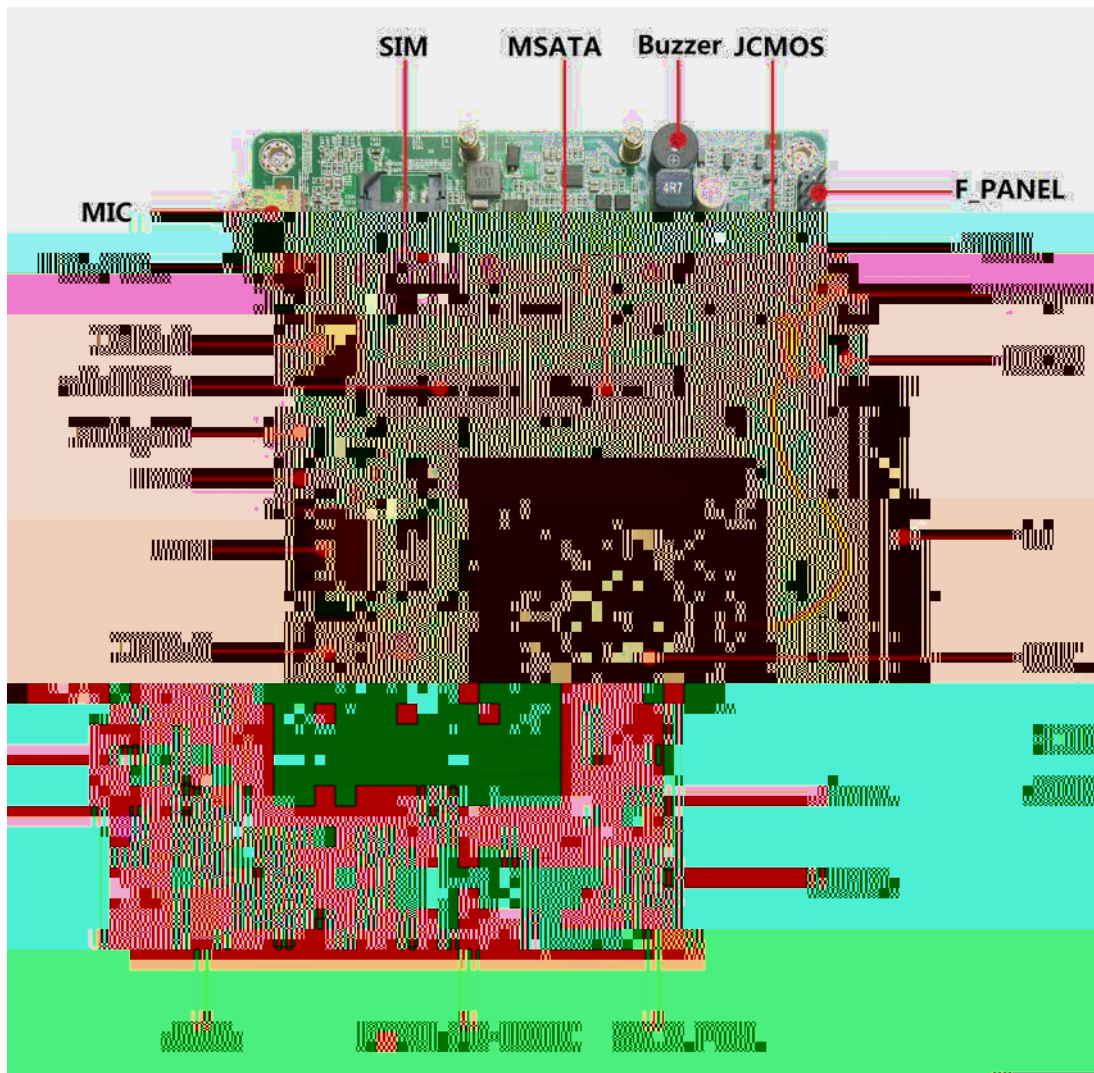


K-B680PS

		Intel Bay trial-D			Intel Bay Trail SOC	
4		165*115mm		1	DDR3 SO-DIMM	8GB
	1080p		VGA		HDMI Port	OPS
HDMI					Line out	MIC
	1	MSATA		1	RJ45	6 USB
3*Port	OPS	3	USB		1	Mini-PCIE
1	SIM		WIFI	3G	1	COM
		GP		DC		, 12V~19V
			LED			

16.5*11.5cm
 OPS 80pin OPS
 SOC 10W <=15W
 6*USB 6*GPIO 1*COM 2*SATA(1*SATA+1*MSATA) 1*G LAN
 1*Mini-PCIE(1 3G) 1*VGA 2*HDMI

	CPU	Intel® Celeron J1800(J1900)	
		2.41GHz	
		10W BGA	
		SO-DIMM DDR3L-1333	1600MHz 1.35v
		8GB	
	Bios	SPI AMI EFI bios	
ACPI2.0B, APM1.2, DIM2.0, SMBIOS2.5			
		Intel HD Graphics 311~688MHz Burst 895MHz	
		1 VGA	
		1 HDMI Port	
		OPS HDMI Port	
		RTL8111E	
		10/100/1000Mbps	
		1 RJ45	
Audio		Realtek HD ALC662	
		1 Line-out,1 MIC	
		OPS Line-out	
USB		USB2.0 480Mb/s	
		2 USB2.0 1 USB3.0 1 USB	
		OPS 3 USB Port JUSB	
	SATA	1 SATA2.0	
	MSATA	1 MSATA	
IO		ITE8728F	
		1 R232 COM OPS 1 TTL COM	
	Mini-PCIE	1 Mini-PCIE SIM 3G	
	GPIO	1	
		1 ATX 2pin , 1 OPS DC-JACK 12V~19V DC	
PCB		165*115mm 6layer	
	Windows	WIN7/WIN8	
		Unix/Linux/Android 4.2.2	
		-20~60	
		0~85%RH	

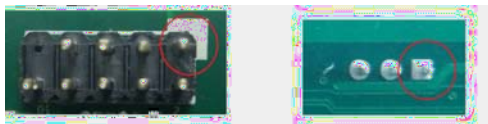


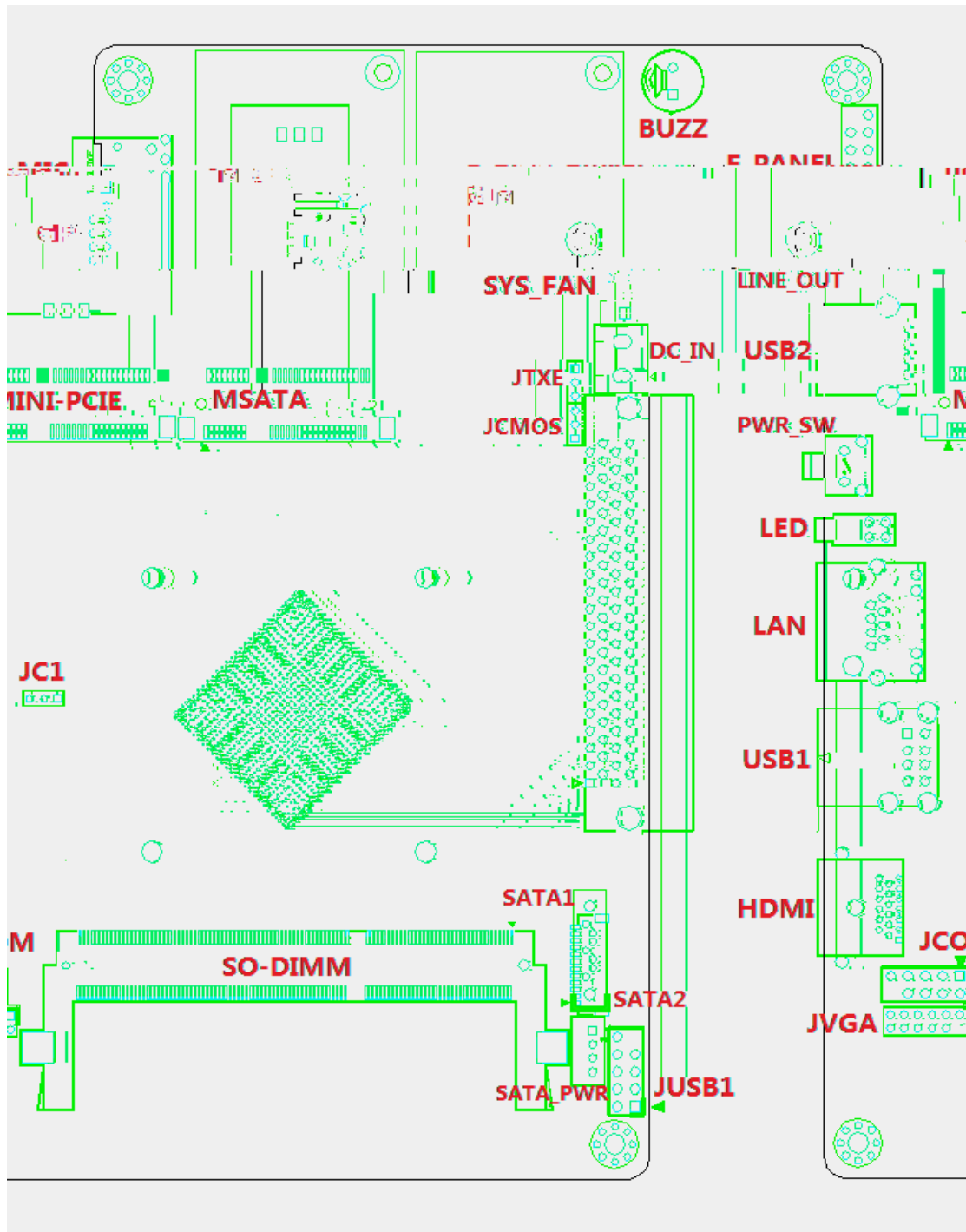
IO

1PIN

1

2





DC_IN	DC
HDMI	HDMI
USB1	USB2.0
LAN	RJ45
USB2	USB3.0 (OPS USB3.0 Co-lay)
JC1	USB1 USB2
LINE	Line-out
MIC	MIC
GP	
JCMOS	CMOS
JCOM	COM
SATA1	SATA
SATA2	12pin Wafer SATA SATA1
SATA_PWR	SATA
F_PANEL	---- / HDD/PWR LED
JUSB	USB 2.0
JVGA	VGA
LED	HD
PWR_SW	
JTXE	ME
SYS_FAN	

2

SATA2	1	5V			
	2	5V			
	3	5V			
	4	5V			
	5	GND			
	6	GND			
	7	SATA_TX+			
	8	SATA_TX-			
	9	GND			
	10	SATA_RX-			
	11	SATA_RX+			
	12	GND			
SATA_PWR	1	5V			
	2	GND			
	3	GND			
	4	12V			
SYS_FAN	1	GND			
	2	12v			
	3	FAN_DET			
J1	1	DDP_3-	41		
	2	DDP_3+	42		
	3	GND	43		
	4	DDP_2-	44		
	5	DDP_2+	45		
	6	GND	46		
	7	DDP_1-	47		
	8	DDP_1+	48		
	9	GND	49	DEVICE RST	
	10	DDP_0-	50	SYS_FAN	
	11	DDP_0+	51	UART_RXD	
	12	GND	52	UART_TXD	
	13	DDP_AUXN	53	GND	
	14	DDP_AUXP	54	USB3_RX-	
	15	DDP_HPD	55	USB3_RX+	
	16	GND	56	GND	

3

J1	17	HDMI_CLK-	57	USB3_TX-	
	18	HDMI_CLK+	58	USB3_TX+	
	19	GND	59	GND	
	20	HDMI_TX0-	60	USB2_P2-	
	21	HDMI_TX0+	61	USB2_P2+	
	22	GND	62	GND	
	23	HDMI_TX1-	63	USB2_P1-	
	24	HDMI_TX1+	64	USB2_P1+	
	25	GND	65	GND	
	26	HDMI_TX2-	66	USB2_P0-	
	27	HDMI_TX2+	67	USB2_P0+	
	28	GND	68	GND	
	29	SDA	69	F_OUT_L2	
	30	SDC	70	F_OUT_R2	
	31	DVI_DET	71		
	32	GND	72	PB_DET	
	33	12v	73	PS_ON#	
	34	12v	74	PWR_STATUS	
	35	12v	75	GND	
	36	12v	76	GND	
37	12v	77	GND		